



Seattle Garden Club
A Time to Heal

Virtual Photography Show

2021



Best in Show



Novice Award



Best Interpretation



Creativity Award



Judges' Commendation



1st Place



2nd Place



3rd Place



Honorable Mention

Judges' Commendation



*The Seattle Garden Club
is well on the way to healing.
This creative, interesting
schedule inspired exceptional
participation and excellent
overall quality of entries.*

Class 1 - LAUGHTER

Color

"In the sweetness of friendship let there be laughter and sharing of pleasures. For in the dew of little things the heart finds its morning and is refreshed." -- Kahlil Gibran

A photograph of humorous interaction between two or more Natural Elements involving plants or animals.



Class 1

Cousin Fun in the Sun

Magical moment of making memories.

Judges' Comments

*This lively and rhythmic photo, framed by cousins, effectively draws the **viewer's eye** into the playful action. The dominance of the foreground figure gives depth to the image.*

If possible, it might have been nice to show more of the cousin on the right edge.

Novice Award:

A skillfully captured moment of humor and fun creates a fond memory.



Class 1

Getting to Know You

On May 6, 2020, I
saw this family of 19 newly
hatched goslings resting by
the water in the
arboretum with the parents
close by.

Judges' Comments



*This image shows emotion and
highlights the preciousness of
nature. The good tonal range
keeps your eye moving
throughout the space.*

*Vignetting or darkening the
dead leaves in the foreground
and background might pull the
eye to the subject matter.*



Charlee Reed

Class 1

"Can we please
be **friends"**



Judges' Comments

This sweet, balanced composition shows the potential of friendship and connection between two species and is dreamy with complementary colors.

The orange fish in the corner is distracting.



Class 1

Nature's Creature

I love finding faces created completely by natural elements coming together over time and interaction. Here is one of my favorites!



Judge's Comments

This is a well seen and composed shot, with nice texture on the log and grasses

Perhaps shooting photo at a different time of day would have added richness in tone to the log and enhanced the background.



Class 2 - LONGING

"What hidden, hoarded longings there are in all of us" -- John Steinbeck

Black & White

A photograph depicting the interplay of light and shadow



Class 2

While trees sleep and
the earth lies
hidden, shadows
dance upon the
snow.

**"If winter comes, can
spring be far
behind?"**

Percy Bysshe
Shelley

Judge's Comments

*Diagonal lines carry the eye
through a full range of light
and dark tones in this
mystical image. Successful
interpretation of the theme.*



Class 2

Reflection of All Things Past

This vessel held a
place in a room
that was once a
wonderful
gathering space.



Judges' Comments

*The repetition of forms
is the strong element of
the image.*

*Attention to white light
creates an imbalance in
the picture.*



Class 2

October Glow

Even as nature approaches dormancy, the trees shimmer in the late afternoon light.

Lichen-covered boulders seem alive. A bare, fallen log recalls cycles of life and death.



Judge's Comments

Crisp and clear capture of fall image.

Stronger focal point would strengthen your message.



Class 2

Latitude

My intent is to show
a longing for
freedom to do
whatever, or
latitude, as the title
indicates.



Judges' Comments

*The image of longing is
well captured.*

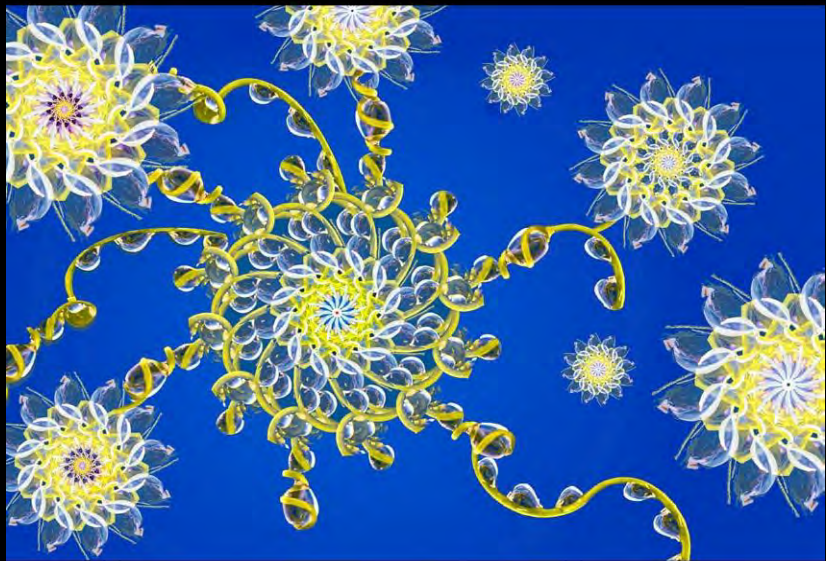
*Raising or lowering the
horizon line offers a
more dynamic image.*



Class 3 - TURMOIL

There is peace even in the **storm.**" --Vincent van Gogh

A photograph of **nature's** twists and turns using creative manipulation. Plant material required.



Judges' Commendation



Class 3

*Four well developed,
artistic responses to
the class.*

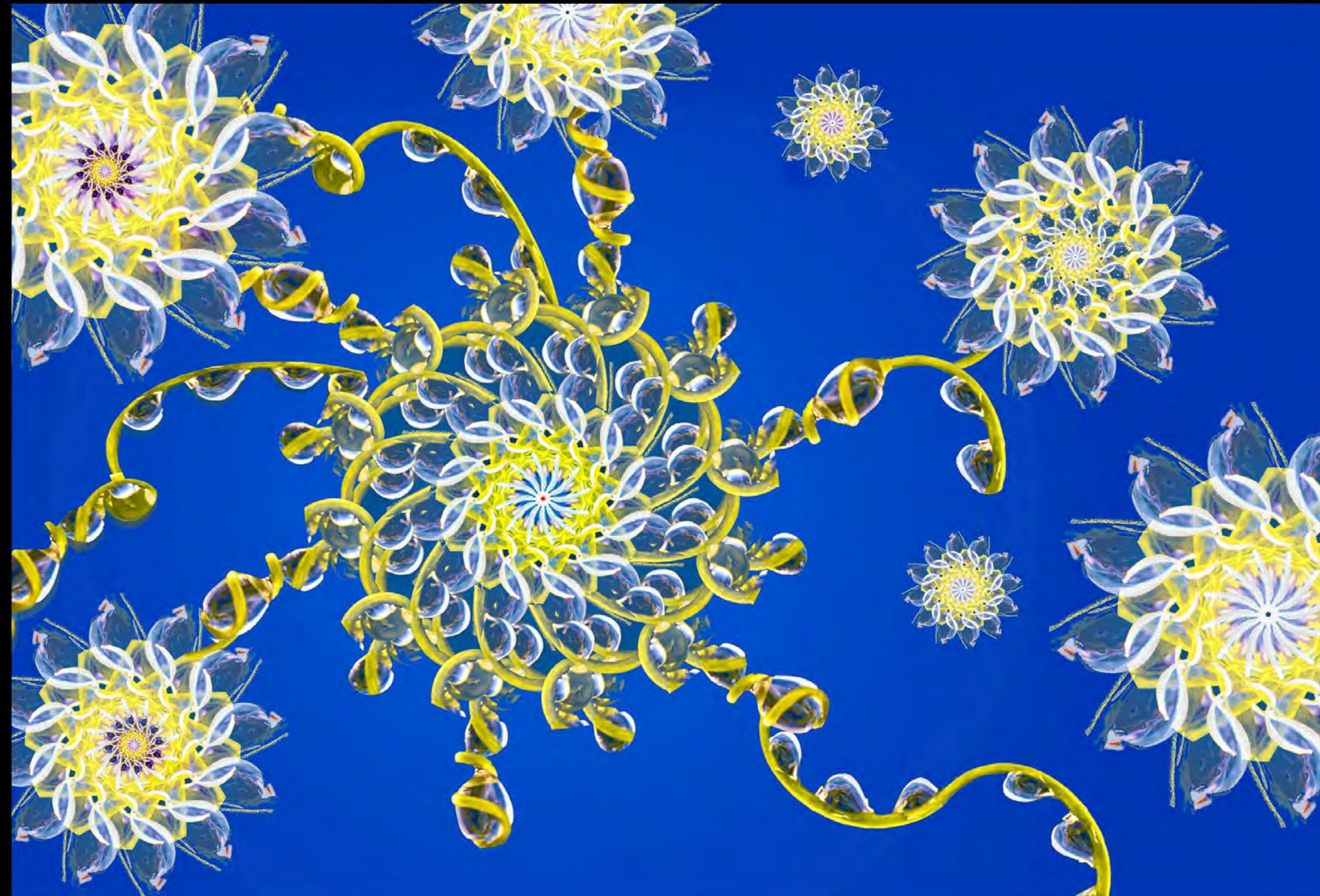
Class 3

Turmoil

"**Always** remember you are braver than you believe, stronger than you seem, smarter than you think and twice as beautiful as **you've** ever **imagined.**"

Dr Seuss

Clematis vine



Judges' Comments

This is an original, innovative and playful pattern of turmoil, enhanced by the use of color. The beautiful flow of dewdrops through the vines creates a jewel-like effect.



Creativity Award:

Your imaginative twists and turns and strong technical skill create a stunningly unique response to the theme.

Class 3

*Sequitur of
Isolation*

Caesalpinia
pulcherrima 'flava'

Judges' Comments

*The movement of these
skillfully manipulated
flowers, so bold in color
and direction, evoke a
clear sense of turmoil.*

A strong second.



Class 3

Ice Garden - Freesia

This freesia is twirling
its way out of the ice
to avoid turmoil

Freesia



Judge's Comments

*The balanced placement of
the flowers creates a
pleasing rhythm through
this painterly image.*

*The image **doesn't** convey
emotion of turmoil.*



Class 3

*Dancing in the Midst
of the Graces!*

*Almond tree
Prunus dulcis*



Judges' Comments

A fun, whimsical and colorful interpretation of an almond grove creates an alternate dimension of reality.

The image might be strengthened by a more judicious selection of elements.

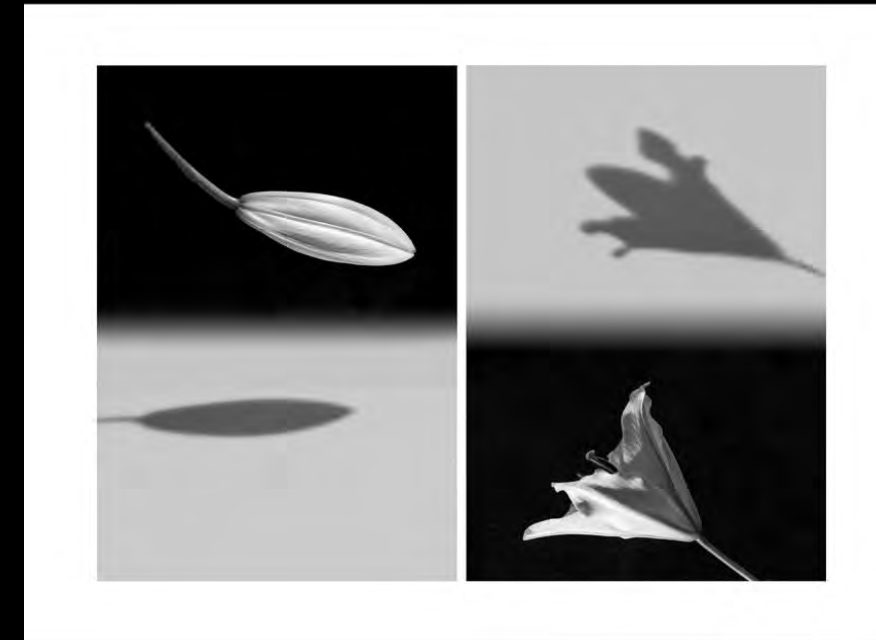
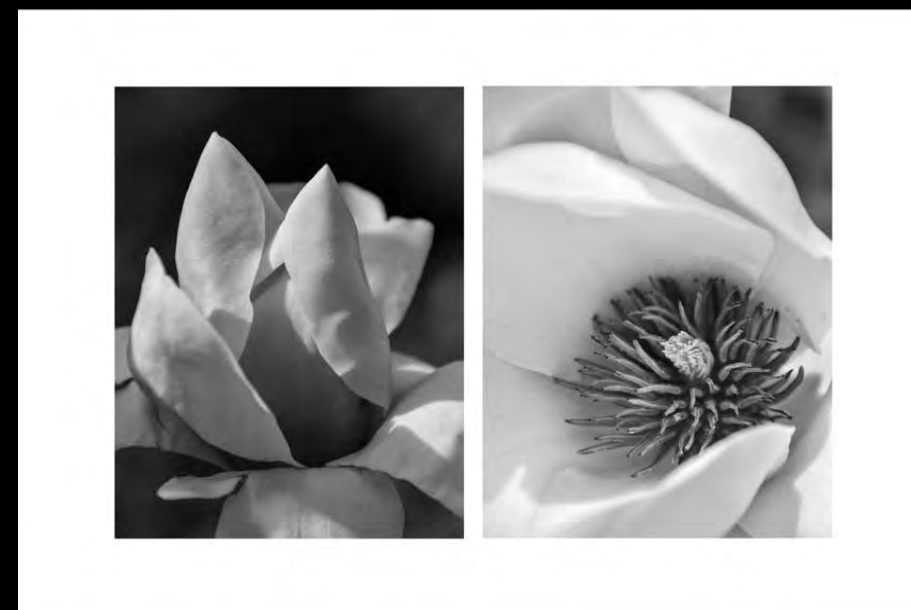


Class 4 – ILLUMINATION

Monochrome

“Look how a single candle can both defy and define the **darkness.**” -- Anne Frank

Two photographs, a diptych, emphasizing light to capture two stages of the emergence of a single flower.
Plant material required.



Judges' Commendation



Class 4

*All the beauty in life is made
of light and shadows.*

Class 4

*Beauty
at any Age*

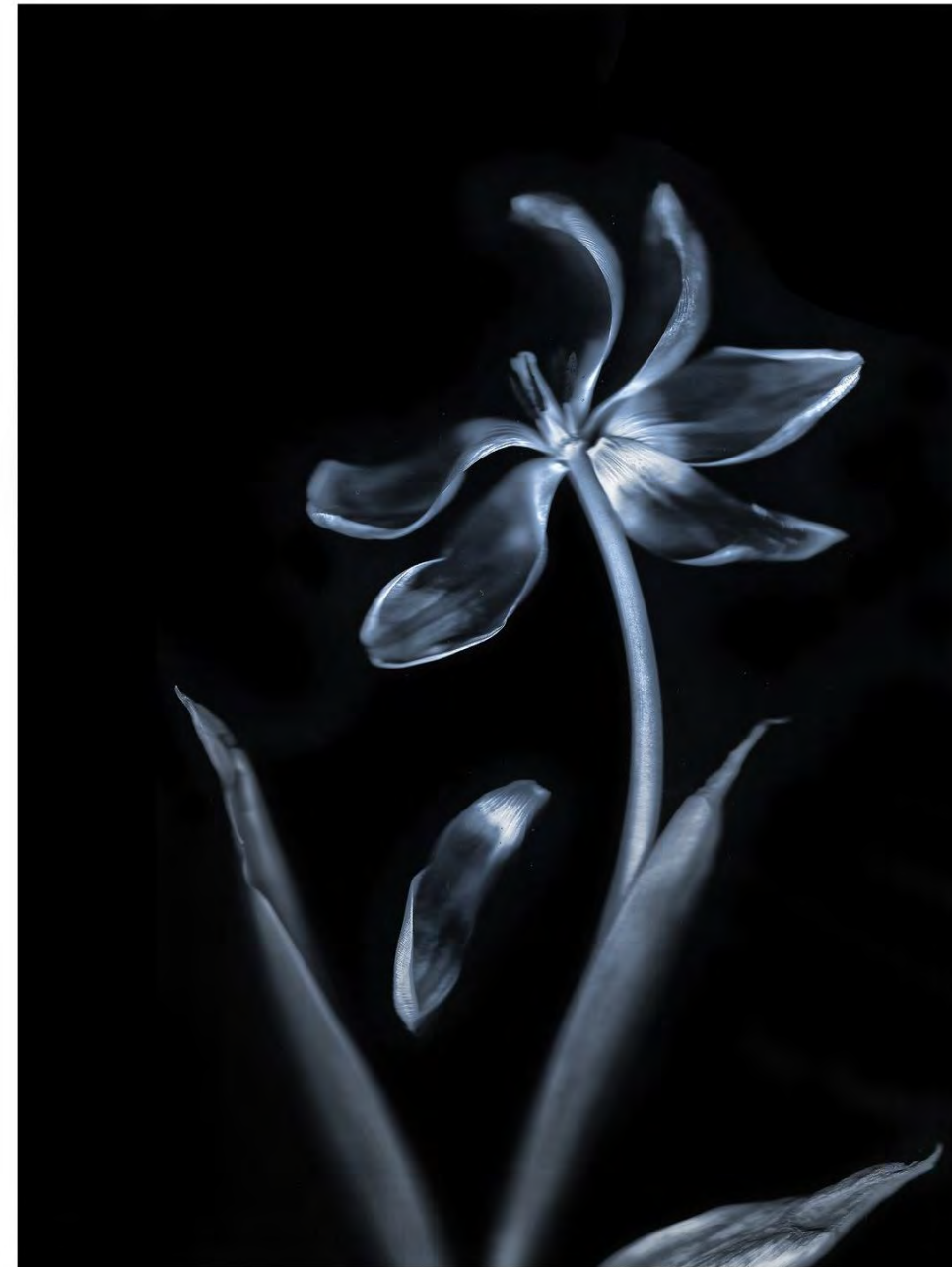
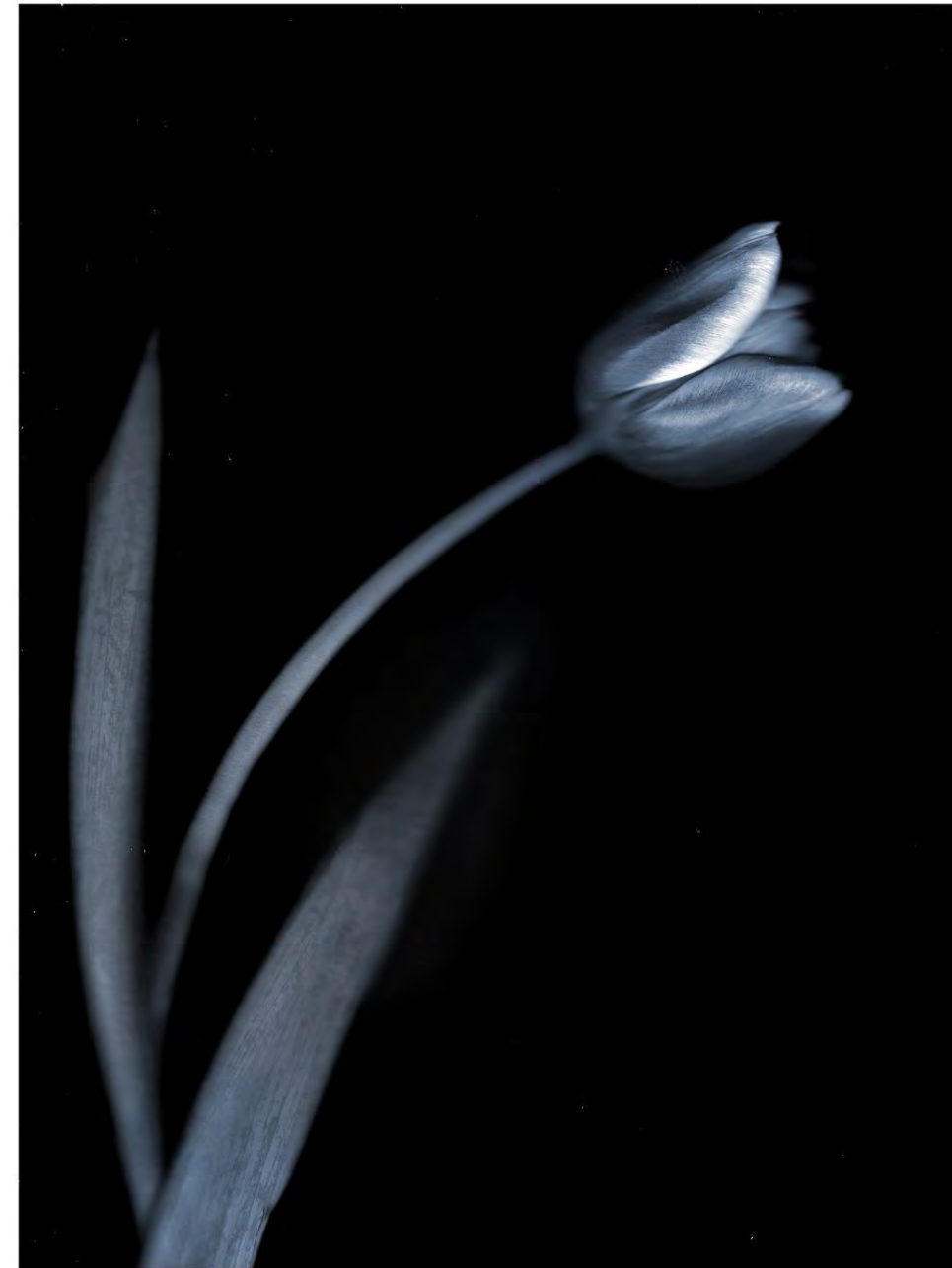
Emperor Tulip

Judge's Comments

*The use of
restrained light on
the curving tulips is
artful.*

*The staging shows
visual purpose and
implied movement.*

*Best Interpretation:
The rhythmic flow of the
beautifully lit blossoms
perfectly captures the
essence of the class.*



Class 4

Illumination

Every moment of
light and dark is a
miracle.

Walt Whitman

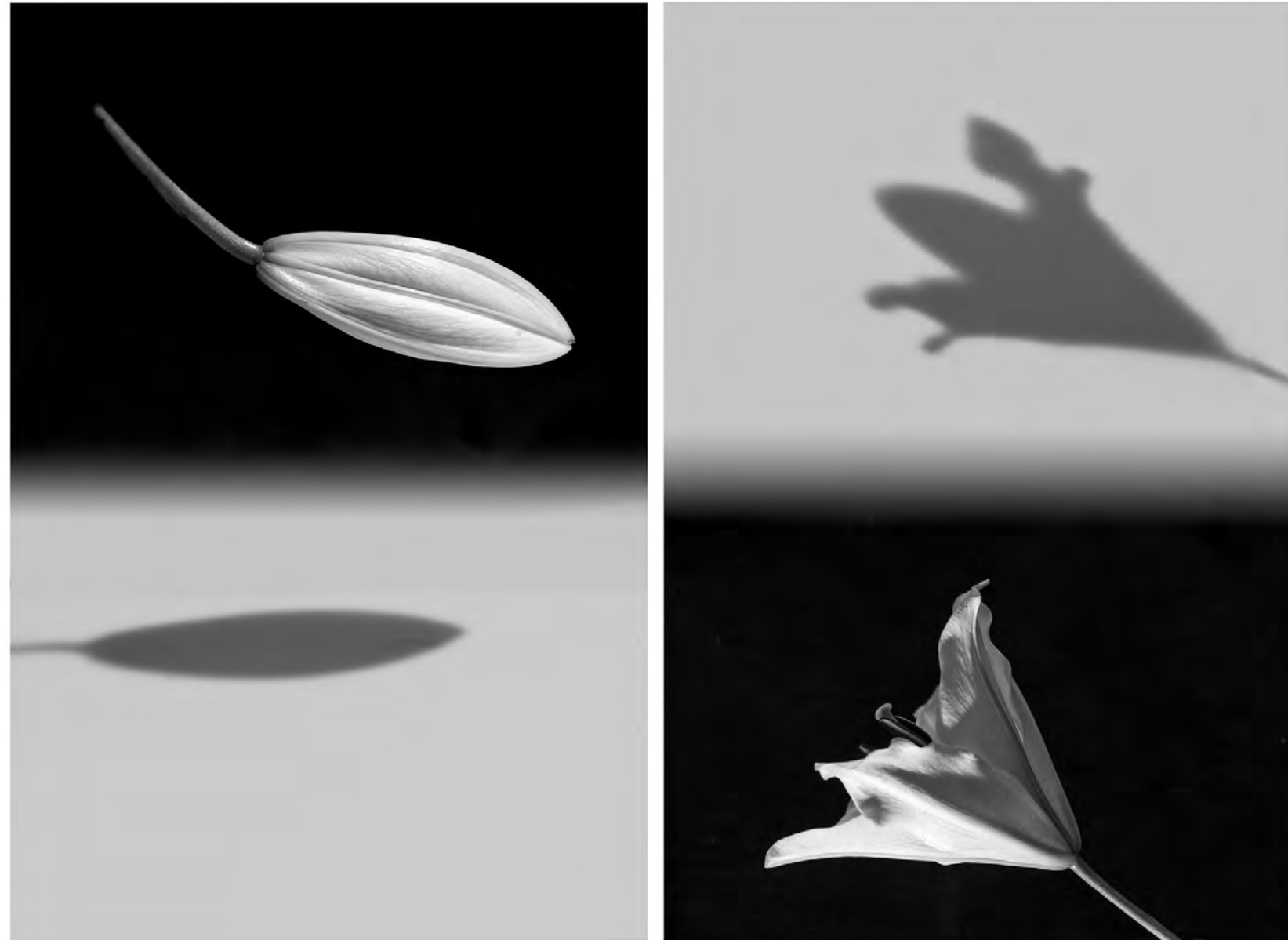
Lilium candidum



Judges' Comments

*Creative interpretation
of the class. Clever
use of white space
and shadows makes
for pleasing minimalist
images.*

*The focus on open
blossom is soft.*



Class 4

*In the
Morning
Stillness*

Magnolia

Judge's Comments

Soft focus on dreamy petals and interesting details invite the viewer's eye to circle around the image to appreciate the beauty of the magnolia

It would be nice to have a better balance of tonal range across the images. Whites in left image are not as strong.



Class 4

Amaryllis

*Amaryllis
'White
Nymph'*



Judges' Comments

The lighting and use of negative space create a dramatic image of the bud. Shades of gray help to define the full bloom.

Focus not as sharp on the opened bloom.



A photograph depicting the interplay of light and shadow

Class 5 - CLEANSING

COLOR
BLACK & WHITE

"If there is magic on this planet, it is contained in **water.**" --Loren Eisely

A photograph showing the majesty of water.
A photograph showing the majesty of water.

Color



Class 5

The serenity of a
hidden lake
graced with the
majesty of
ancient cypress
trees

*Taxodium
distichum Bald
Cypress*



Judges' Comments

Exquisite.



*Best in Show:
Outstanding in
all respects.
Well done.*



Laurie Riley

Class 5

Judges' Comments

*Well framed
sensory image
with strong
leading lines.*



Jo Anne Rosen

Class 5

*Moment of
Majesty
The Elusive
Perfect Wave*



Judge's Comments

*Well composed
photo that shows
the power and real
majesty of water.*

*Dominance of
foreground is
puzzling.*



Class 5

*Antarctic Seabird
and Water drops*



Judges' Comments

*Focus on the seabird
captures a moment
in time.*

*Raising or lowering
horizon line offers a
more dynamic
composition.*



Class 6 - VISUALIZATION

Color Novice

"It all depends on what you **visualize.**" -- Ansel Adams

A landscape showing a path forward. Novice Class



Class 6

*Landscape
Path*

Ebey's Bluff



Judge's Comments

*Several paths lead the viewer around the corner. **What's next?***



Class 6

The Way Forward

The path underfoot
is difficult to see.
Alone it is a hunch.

Together, There are
crunching footsteps
to follow.

The only way
forward is through.

Judges' Comments

*A unique path that
effectively captures
light and dark
tones in an all
white scene.*

Clouds dominate.



Class 6

Discovering a Path Forward

I found a
bold path in
Discovery Park and
framed the
dramatic clouds in
the sky to
keep the rhythm
moving forward.

Judges' Comments

*Dramatic sky and
leading line of the path
draws the viewer in.*

*Careful when editing
not to overdo.*



Class 6

Landscape Path

Judge's Comments

*Effective Use
of the leading
line directs
the viewer
through the
path.*

*Foreground
detracts and
competes for
attention.*

