



Seattle Garden Club

# *All The Buzz*

March, 2022

[www.seattlegardenclub.org](http://www.seattlegardenclub.org)

President's Letter

Programs, E-news, &

Opportunities

Ways and Means

Fragrance Garden

Conservation

Horticulture

Member Candidis

Garden Giggles

Something Fun

Newsletter editor:

Stacey Campbell



As we welcome winter weather giving way to spring, I've been studying my garden and plotting the kinds of changes most gardeners anticipate this time of year. Evaluating which shrubs and perennials survived or even thrived with the cycle of freezing weather, followed by warmer weather, and then occasionally (gasp) by snowfall is an annual rite of passage for Seattle area gardeners, and I know I am in good company with many of you!

This annual cycle of contemplation and renewal was also inherent in the agenda for our February business meeting. Skillfully planned and led by President-elect Peggy-Paige Most and members of her Policy & Planning Committee, with an agenda rooted in both current business and future planning, decisions were made to revise two Bylaws, support the GCA Founders Fund recommendation and approve five projects for grant funding. Community Projects Chair Sue Simmons and her hard-working committee are to be commended and showered with appreciation for bringing forward excellent projects for consideration.

In addition to these important decisions, Treasurer Sandy Hanower assured members of the club's healthy financial status and provided a comprehensive overview of our endowments held with the Seattle Foundation. Once the business aspects of the meeting had been completed, Ad-hoc Committee on Building Diversity Co-Chairs Dabney Rohrbach and Jenny Wyatt helped turn our attention to the future by posing intriguing questions about diversity that led to thoughtful discussions among members randomly assigned to numerous chat rooms.

Looking ahead to our March Hort and General meetings, we'll return to CUH for in person (with a Zoom option) meetings for much anticipated Provisional talks by Anne Dor and Helen Blair and a wonderful program on botanical art by renowned botanical artist Catherine Watters. Catherine's bio and information on her impressive array of work can be found on her website at [CatherineWatters.com](http://CatherineWatters.com)

Wishing you joy and lots of fun in contemplating spring renewal and future blooms within your own gardens!

Barbara

## Programs, E-news & Opportunities

**Be sure to check the online master calendar for the latest information.**

[Click here for the SGC Calender](#)



**PLEASE SIGN-UP for SGC MEETINGS via [SIGN-UP-GENIUS \(SUG\)](#)**

By using Sign-Up-Genius (SUG) as you rsvp for all SGC meetings you'll help us stay organized and it will help YOU with reminders and give you all the information you will need to join our zoom calls.

**If we all learn to take a few minutes to learn the habit of using Sign-Up-Genius for all our meetings, our systems will run more smoothly, we'll have more time to learn from one another and have fun!**

### GCA Online

GCA is providing access to conferences and study groups to all members. Go to the GCA website to access these talks.

[GCA Homepage](#)



### Have any articles or photos that would interest all of GCA?

If so, please send ideas first to, Margaret Williams, Zone XII Bulletin Rep. -

[mawilliams712@gmail.com](mailto:mawilliams712@gmail.com)



## Ways & Means

The Ways and Means Committee would like to, again, thank you all for your generosity in supporting the 2021 Auction. We are grateful and appreciative.

We have a few spaces available for a few of our experiences. Please contact either Tori or Cindy if you would like to sign up or have any questions.

April 6<sup>th</sup>                      Olmstead Park Tour  
and picnic lunch  
\$50

May 24<sup>th</sup>                      Picture Perfect Plant  
Portraits Photo Workshop      \$100

June 22<sup>nd</sup>                      Summer Soiree in the  
Highlands, Board Cocktail Party      \$75

Cindy and Tori  
Ways and Means co-chairs  
[cynthia@oneartglobal.com](mailto:cynthia@oneartglobal.com)  
[ctragen@comcast.net](mailto:ctragen@comcast.net)

## Fragrance Garden

The Fragrance Garden will be having a work party when things warm up a bit for the Incoming Provisionals to get to know it better, get their hands dirty and they get to know each other too!

Time yet to be determined!





# Conservation

Have you ever tried eliminating plastic for a month? The Conservation committee attempted to do this for the month of January. We raised our plastic awareness and created some new habits. We are going to try it again for the month of May. Take the challenge with us.

If you are interested in hearing what members learned and tips on how to reduce plastic please check out our Tips on Reducing Plastics on our SGC website at : <https://www.seattlegardenclub.org/conservation-2/>

As spring approaches we are reminded how important it is not to use chemicals in our yards. Please click on the GCA Healthy Yard Pledge site to watch a short video and to take the pledge.

<https://www.gcamerica.org/members/committees-conservation#resourceid=4821>

Don't forget to send your friends and family activities from OUTSIDE YOUR DOOR created by the conservation committee. [outsideyourdoor.org](https://outsideyourdoor.org) (password : **outside**)



# Horticulture

Mark your calendars and please join us at CUH March 7 for a hybrid Hort meeting featuring not one but two in-person Provisional talks! Anne Dor leads off the morning with the “United States Gift to Healing Using Native Medicinal Plants – Hawaii and California”. Find out what makes California’s west coast the #1 biodiversity hotspot in the world and why Hawaii has over 8,000 endemic species. Did you know Anne has a special connection to our 50<sup>th</sup> state?

Next up is Helen Blair whose topic is the “United States Gift to Healing Using Native Medicinal Plants – Great Basin”. According to Helen, in what we now call the United States, the native people of the Great Basin lived uninterrupted in the areas bound by the Rockies to the east and the Sierras to the west longer than any other indigenous population. The plants you’ve likely admired on hikes in Utah, Colorado, and southern Idaho have important medicinal and cultural meaning for those tribes.

Eliza Davidson returns with a captivating tour of Seattle’s Comprehensive Olmsted park system. See the whole sweep of the famed “Emerald Necklace” from Seward Park to Fort Lawton/Discovery Park. This most significant of all the firm’s projects here set in motion 3 decades of commissions, for both public parks and private clients. We are beyond fortunate to have Eliza as our very own in-house Olmsted scholar.

Hort Share returns! Tour your garden, take a snip, bring your own vase and share your treasure. Please make an effort to label your plants with both common and Latin names.

9:45 am Social, 10 – 11:45 am Program. If coming to CUH please bring your own refreshments. Those watching at home pour yourself a second cup of coffee and spend your morning with us. As always you will submit your questions in the Chat to our moderator extraordinaire, Barbara Feasey.

To join the Hort meeting go to the [Zoom](#) link here.

Please RSVP using the [Sign Up Genius](#) link here.

# Policy & Planning

## NEW SGC YEARBOOK NAME FORMAT FROM THE POLICY AND PLANNING COMMITTEE

GARRETSON, Wade

DAVIS, Carey Hunter

MOST, Peggy-Paige (Peter)

STEINER, Carlyn Koch (George\*)

ROZE, Joanna "Jolie" Stratton (Gatis)

FEASEY, Barbara (William L. Bryant, III)

KITCHELL, Dr. Carolyn (Dr. Robert)

CRUTCHER, Jill Summers (Dr. James, Jr.)

SNAPP, Barbara "Barbie" (Dr. Phillip Chapman)

If spouses use the same last name, it will not be repeated.

Use of a nickname, maiden name or middle initial would be up to each member.

The \* indicates spouse is deceased. Formal name of member would include his name.

example: Mrs. George Steiner

## Member Candids





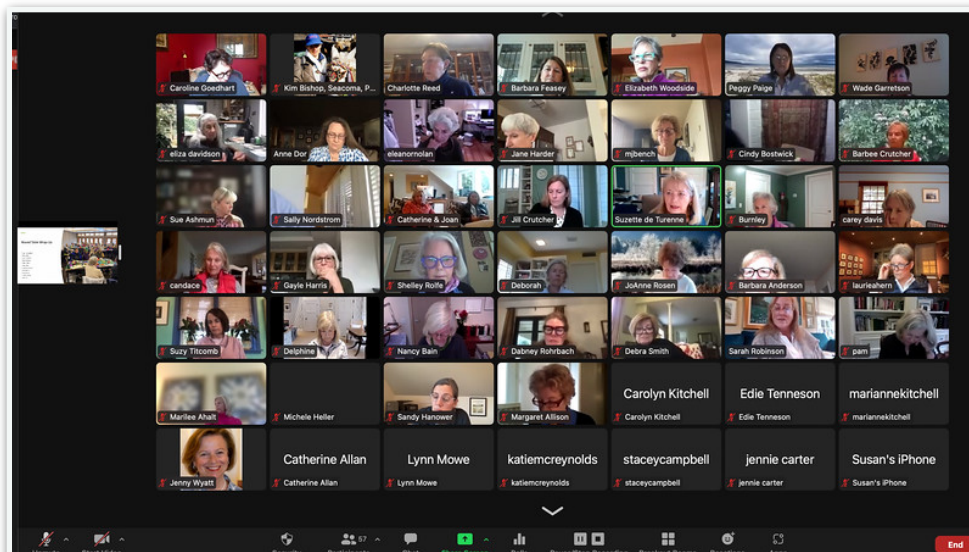


[More Winter Garden Gallery](#)  
[Select here](#)





 <p><b>Trees for Neighborhoods</b> \$20,400 Growing Tree Canopy in Seattle's Underserved Neighborhoods</p>	 <p><b>Tilth Alliance</b> \$10,000 Children's Garden Rejuvenation</p>	 <p><b>Friends of Seattle's Olmsted Parks</b> \$10,000 Trees for Seattle Parks</p>	
 <p><b>Plant Amnesty</b> \$6,000 Cass Turnbull Garden</p>	 <p><b>GROW</b> \$1,600 P-Patch Garden Support</p>		





## Garden Giggles

How do you know you are a Master Gardener?

There is a decorative compost container on your kitchen counter.

You would rather go to a nursery to shop than a clothing store.

You prefer gardening to watching television.

You plan vacation trips to arboretums and public parks.

Dirt under your fingernails and calloused palms are matters of pride.

## Something Fun



### **What Nature can teach us about sustainable business.**

From glue alternatives inspired by gecko's feet to factories that produce a net benefit to the environment, Interface's VP and chief sustainability officer Erin Meezan explains how we can look to nature to learn how to make business more sustainable. Detailing the innovative solutions...

To Watch: <https://www.ted.com/talks/>