

COMMUNITY PROJECTS

2023 - 2024

Bellevue College Foundation Arboretum

In April of 2023 this Arboretum was granted certification status and joins the other arboretums in our state in its high standards of practices, diversity of tree and plant specimens and care and maintenance.

The Arboretum requested funding to update educational signage throughout the four zones of the campus. The staff have been working with Snohomish Tribal Leaders to include Lushootseed translations for native plants on these signs. In addition to updating individual plant signs, BC is adding signs with more educational content to the four existing zones of the Arboretum, as well as a larger sign in the Colleges future Community Garden, to begin construction this year.

Over 18,000 students come to this campus every year, and the placement of these signs will provide countless educational opportunities for all who read them. The student population is incredibly diverse.



Breakdown of the student population is 27% Asian, 4.6% Black and African American, 11.6% Latinx, 11.8% two or more race and 0.5% Native American and Native Hawaiian. 36.5% are white.

The Arboretum has a full time Grounds Department, led by a Certified Arborist for this 100 acre forest.

Seattle Garden Club will be recognized on the larger zonal signs as having made this project possible, as well as on the Bellevue College website, and in the Bellevue College Foundational annual report.

Amount - \$5,000



Carl S. English Jr. Botanical Gardens

The Carl S. English Botanical Gardens' grant is to restore and enhance a section of the gardens in the woodland area. Planting beds have been degraded by human and pet traffic. The proposed plantings will discourage foot traffic and block clear opportunities for dogs to enter and disrupt these areas. Plants are to be purchased from smaller regional nurseries.

The Gardens would like to honor us with a bench-like boulder placed near the plantings and have it etched or inlaid noting our contributions and date of project.



The Gardens have a goal of having 60% native plants in their collection which also includes many lovely species of rhododendrons and other desirable plants.

We have a long history with this gem of a garden in Seattle – and it is known as the third most visited tourist destination by tourists. The garden staff have worked with us in the past at the Montlake Cut and are very excited at the prospect of being partnered with us again.

Amount - \$5,500.



City Fruit

This organization incorporated in 2010 stewards and harvest from urban fruit trees to support sustainable and equitable access to fruit. Volunteers from City Fruit assist with maintaining our public orchards and help to harvest annually over 35,000 pounds of fruit to contribute to 30 local food banks, meal programs and elementary schools.



The monies granted will help to fund the Master Fruit Tree Stewards Program and would fund scholarships for 5 participants in the program who could not otherwise participate. A total of 25 students are in this program each year. Participants learn about orchard planting, mature fruit tree maintenance, fruit tree anatomy and grafting, pruning, integrated pest management and other aspects of fruit tree care all the way through harvesting and processing.

We will be recognized on their City Fruit website on the Master Tree Fruit Stewards page, in its Annual Report and in Educational materials and nametags for the program.
Amount - \$2,000



Garfield Super Block

This large block full of activity is in the heart of the Central District and includes the Garfield Community Center, Medgar Evers Pool, the Tennis Courts and adjoining Garfield Park, Teen Life Center, Quincy Jones Performing Arts Center, and Garfield High School Track and Field. The grant is in conjunction with the plan to renovate, improve and beautify the heavily used section which borders the southeast corner baseball fields.

This section of the block is in sore need of beautification. Right now where there are currently just concrete and bleachers and a bare hillside will be an ADA accessible ramp, a slide and a boulder scramble funded by King County which will make this area a popular one for families enjoying watching the games on the fields. A climate adapted garden for this corner is where we join the cause.

Garfield Super Block



Park and Promenade Improvement Project

www.garfieldsuperblock.org

The Seattle Garden Club will be funding the plants for this climate adapted garden area. Thoughtfully chosen plants have been planned for this area by the landscape architect team given its late afternoon sunshine and heat. The area will be irrigated appropriately and maintained by Seattle Parks Department Staff.

Our contribution will be listed on the Garfield Super Block website, in social media, press releases, during opening events and in Seattle Parks Foundation's Annual Report.

Amount - \$15,000

SITE PLAN | 100% DESIGN DEVELOPMENT



Plymouth Housing Authority

Plymouth Housing Authority has long had a goal to eliminate homelessness and to provide adults experiencing homelessness with opportunities to improve their lives. Green spaces are known to provide significant health benefits and for that reason Plymouth has been incorporating green spaces into their facilities. Three of Plymouth's facilities were approved by the Community Projects Committee and the Board to receive funding for this goal.

The Seattle Garden Club will be recognized through social media and website recognition, and be included in the Annual Report. Plaques will be created for planter boxes or within each building's garden space.



Langdon and Anne Simons Senior Apartments

This facility has the largest green space available to work with and will be receiving funding to revive its community vegetable garden through purchase of seeds, soil, plants, fertilizer, gloves and tools. 92 formerly homeless seniors live in this facility and are mostly U.S. military veterans.

Amount - \$10,000



The Blake House

The Blake House, named after the late Blake Nordstrom, will be using these funds to purchase planter beds, vegetable seed, starters and materials to install an irrigation system. Blake House provides 112 studio apartments to formerly homeless vets and seniors.

Amount - \$6,000



A. L. Humphrey House

This facility will be purchasing planter beds, tools, seeds and starters for a vegetable garden and a composting bed. They have never had a vegetable garden at this facility which provides a home for 84 residents.

Amount - \$3,000



Tilth Alliance

Tilth works in alliance with Washington farmers, gardeners and eaters to build a sustainable and equitable food future. The Rainier Beach Urban Farm and Wetlands is the City's largest urban farm.

This eleven acre site provides a wide variety of programs for families, youths and elders including programs that address food justice and provide outdoor environmental education. It is a city park where people come together to grow food, foster community and work to restore the wetlands. The garden provides free community u-pick opportunities and a farm stand. They have online cooking classes, community kitchen dinner events and programs including camps, afterschool programs, field trips and more.



Tilth requests funds for high quality, durable signs to support visitors' understanding of the importance of gardening and regenerative cultivation, making this whole area an interactive classroom, serving to encourage sustainable practices and community cooperation and participation.

Our name and/or logo will be included on the larger signs created. This would give years of recognition and be seen by many thousands of people

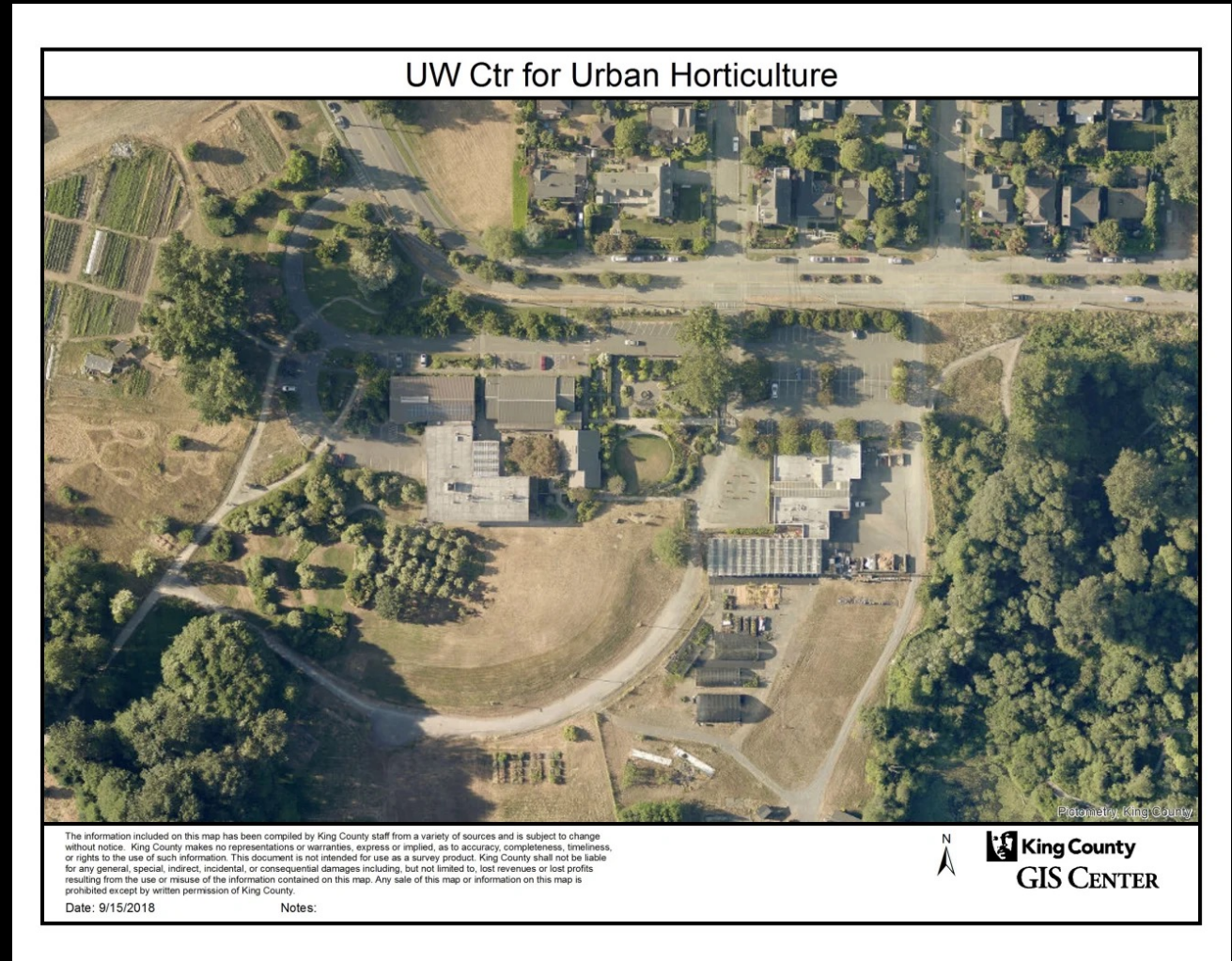
Amount - \$10,000



University of Washington Culinary Farm

The mission of the UW Farm is to be the campus center for the practice and study of urban agriculture and sustainability, and an educational and community-oriented resource for people who want to learn about productive and sustainable urban landscapes.

The farm has sustained a great deal of damage from deer and ongoing theft and vandalism in the past several years. 50% of all apples, cabbages, lettuce and all roses were lost last year. Coupled with that, food insecurity is becoming a real issue amongst students at the UW. On average 25% of students experience food insecurity while attending university.



The farm initially was asking for us to help with the building of an 8-foot galvanized iron fence to be constructed around the garden, and the plants to run along it. We gave them some ideas as to some other avenues for the construction of this fence and thus reduced the amount of their ask significantly. We will be providing funds for plants to be grown vertically along this fence which will protect this valuable University of Washington resource.

The Seattle Garden Club will be acknowledged on interpretive signs and acknowledged through the UW Farm's Website, blog, newsletter and social media.

Ribbon-cutting event is set for fall 2024.

Amount - \$5,100



Members of Community Projects Committee!

- A huge thank you to my committee!!!
- Margi Allison, Barbara Anderson, Phoebe Andrew, Kim Bishop, Stacey Campbell, Jennie Carter, Barbee Crutcher, Eliza Davidson, Gayle Harris, Candace Lancaster, Kathy Lea, Peggy-Paige Most, Marianne Mowat, Catherine Mueller, Eleanor Nolan, Charlee Reed, Shelley Rolfe, Susan Simmons, Debby Smith