



Seattle Garden Club

# All The Buzz

April 2024

[www.seattlegardenclub.org](http://www.seattlegardenclub.org)



[President's Letter](#)

[Flower Show](#)

[March Hort Mtg](#)

[Hospitality](#)

[Native Plant Month](#)

[Ways & Means](#)

[Luncheon with TGC](#)

[Garden H & D](#)

[Photography](#)

[Conservation](#)

[Fragrance Garden](#)

[GCA Scholarships](#)

[Poetry](#)

[Calendar](#)



Look at what was in the window of the Madison Park Bookstore! So much about natural gardens, insects, wildflowers, and books on nature for children. What a wonderful harbinger of spring (along with all the fabulous blooming cherry and magnolia trees).



Thank you to everyone who participated in the Annual Business Meeting on March 21<sup>st</sup>. We had good attendance and, thanks to Charlee Reed, Meeting Arrangements Chair, the room looked festive with multicolored tablecloths, and there was plenty of food to provide sustenance while we participated in the meeting.

As usual, Kim Bishop made sure our PowerPoint presentations were up and running, and that those on Zoom were able to fully participate in the meeting.

Community Projects Grants were presented for approval by Roxanne Wiley, Chair. The committee chose a diverse group of organizations to fund, from small to large, old favorites and new non-profits. Link to info [select here](#)

Judy Rupert, Treasurer, gave an excellent summary of where our money comes from and how it is spent. We all came away with a better understanding of our budget.

Catherine Mueller, Membership Chair, presented a bylaw change that was unanimously approved, which in summary, allows a member to propose someone for membership after completing two years of active membership. Please refer to the Bylaws for the exact language.

*continued on next page*



*Judy Rupert,  
Treasurer*



*Organizations Supported by Community Projects - [Full list here](#)*



*Roxanne Wiley,  
Community Projects Chair*

We were then given the opportunity to vote on the GCA Founders Fund [link here](#). Our club gets to vote on one of the three finalists presented. Those present voted to put our support towards the program proposed by the Little Garden Club of Rye, NY to replant indigenous and historic species at the Jay Estate in Rye N.Y.

The final hour for the meeting was devoted to a discussion about the future of Hort now that we have suspended provisional talks. There was a lot of good discussion, and I came home with excellent notes from each of the tables and from those on Zoom. I haven't had time to fully summarize the ideas that came forward, but there were a few general themes:

- We want ways to get to know our newest members
- We want more hands-on opportunities at meetings, e.g. making floral arrangements, propagating, pruning
- Becoming a bit more garden focused
- Want to provide opportunities for our members to give talks, or teach us a new skill (with the good suggestion to ask members about their skills in our annual survey)
- Keep the General meetings more outwardly focused, with paid speakers, Hort more hands on and informal.
- Two tables expressed having provisional talks in some form

#### Off-site meetings

There were a lot of opinions regarding meeting in members' homes, field trips and meeting away from CUH. Meeting in Members' homes allows us to visit each other's gardens, allows for bonding with a smaller group, is more casual and informal. On the downside, not everyone could attend a meeting in a home, and it would take more coordination. Definitely need more discussion regarding this.

There were also suggestions about doing one field trip every year with a bus, which could be either hands on (e.g., working in a public garden that needs a helping hand) or educational. This provides the opportunity to get to know each other in a more informal setting and allows us to have new experiences.

I will send out additional information in greater detail when I have time to distill all the notes.

Thanks again to all who participated, your voices make a difference in the future of the club.

Susan Potts, President, Seattle Garden Club



# Flower Show

## Preview Party

All SGC members, Flower Show judges as well as attendees at the last two Holiday auctions should have received a Paperless Post invitation to our Pre-view Party event in their email. We encourage you to attend and to invite a guest!

**To extend an invitation, request a pdf version of the invitation or send your invitee's email address to Dabney Rohrbach at [dmrohrbach@gmail.com](mailto:dmrohrbach@gmail.com).**

We look forward to seeing you at the Flower Show and the Pre-view Party!!



RSVP to this exciting, fun, and social event [here](#) or scan QR code above

## Flower Show Prep



*Ana Hergert, Jill Crutcher, Edie Tenneson, Jenny Wyatt, Sarah Robinson, Catherine Parker*



On March 15th six intrepid volunteers worked together in Catherine Parker's garage spiffing up the pedestals and stands for the Flower Show.

# Flower Show

## Garden Inspirations

### **Volunteers needed!**

Please click on the link below and sign-up for a time or event to volunteer for our 2024 Flower Show, Garden inspirations. Remember, you can sign-up for more than one time slot!

**Volunteer Here!**

If you have already been asked to volunteer, please still complete the form.

Let's try and get 100% participation!

Thank-you.

Flower Show co-chairs

Catherine Allan and Caroline Goedhart



## March Hort Meeting

March 4th we enjoyed a wonderful Provisional Talk by Liz McKallor on Frida Kahlo. Liz was followed by Megan Smith's recommendation for "obedient" trees. The Flower Show Committee kindly went over form filling out and urged all to volunteer for the May Show. Plus we had a great number of lovely plants brought for Horticulture Share.



*Frida Kahlo and Liz McKallor*



*Wade Garretson, Carey Davis,  
Shelley Rolfe, Liz McKallor*



*"Blue Morning Glories"  
by Georgia O'Keeffe*

April 1<sup>st</sup> finds us back at CUH for Linda Walker's talk. Her focus will be on Georgia O'Keeffe, the American flower artist, and how Charlottesville impacted her art. Linda spends part of the year in the Virginia city. This is remarkable having just enjoyed Liz's report on the other female flower artist, Frida.

Anne Dor will follow Linda with information about our Garden, History and Design Committee. The Flower Show Crew is sure to have some final words before the May show. Our gardens should be in full spring blossom, so we look forward to you showing off for Horticulture Share. Don't forget to bring any horticulture books or magazines that are looking for a new home, and your own coffee cup! Hope to see you then!



Carey Davis Horticulture Committee Chair



## Hospitality

Please remember to sign up to bring snacks, coffee, and flowers to our Meetings! Here is the [link](#) for Sign Up Genius or go to SGC webpage. Thank you all,  
Charlee Reed, Hospitality Chair



# April is Native Plant Month!

GCA is striving to get all 50 states to submit and secure legislative Native Plant Proclamations, designating April as the annual Native Plant Month across the country.

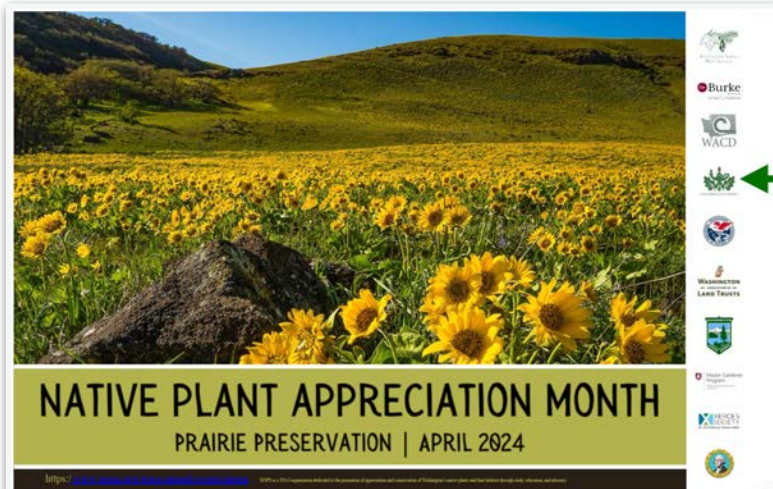
Educational programs to expand awareness of the need to protect native plants and promote their increased use by landscapers and home gardeners is a priority conservation goal for GCA. As we know, native plants provide essential food for bees, butterflies, birds, other pollinators and wildlife. A significant number of North American native species, including insects, caterpillars, birds, and other animals, are at risk of extinction because they cannot survive without access to native plants. GCA publishes a Position Paper which outlines the specific actions our clubs can undertake to advance Native Plant Protection.

Proclamations promoting the importance of active stewardship of native plants is an important first step in guiding local, state, and federal agencies to monitor and conserve rare plants, restore native habitat, expand the native tree canopy and remove non-native invasive plants on public lands. Washington citizens need more information about active stewardship of natives to prevent habitat loss, curtail the use of invasive species, mitigate climate change and limit pesticide use.

In 2023, GCA asked the Seattle and Tacoma Garden Clubs to submit a Proclamation to Jay Inslee requesting that the month of April becomes Native Plant Month.

Fortunately for Washington State, Washington Native Plant Society (WNPS) has submitted the Proclamation annually for nearly two decades, successfully securing the Governor's signature. Over the years WNPS has taken the program from a week-long event to the full month of April. This was no small task. Thanks to WNPS, our job of promoting the annual recognition of April as Native Plant Month in Washington State has been easy.

To continue as listed supporters of the April Native Plant Month, WNPS requests that the Seattle and Tacoma Garden Clubs take an active role in their work by visiting the WNPS website, attending classes and field trips, participating in their photo contests and enjoying a great selection of online events. Even better would be to become a member. They publish a lovely quarterly magazine, *Douglasia*, and offer many events through their chapters. WNPS has 12 chapters throughout the state allowing you to find information that applies directly to your regions of interest. Don't forget spread the word to your friends; education and action are the keys to success!



Please visit the beautiful WNPS website (start with the history page) and get involved! You will be delighted with the offerings! <https://www.wnps.org/>

We were very grateful to have GCA acknowledged as supporters on the WNPS poster. Contact Barbie Snapp with further questions: [araby1957@aol.com](mailto:araby1957@aol.com)

Happy Spring Planting!

Barbie Snapp

With assistance from Gail Sklar, President of WNPS and Shelley Rolfe

# Native Plants

## Symphoricarpus albus or Common Snowberry

This is a delightful deciduous shrub native to the Pacific Northwest and other parts of the country. It produces delicate pink flowers that appear in late spring to summer. White berries follow. The leaves are rounded and measure about 2 inches. The plant itself grows 3-4 feet.

It's very easy to grow, accepts even clay or rocky soil and tolerates drought as well as wet areas. Snowberries are a great addition to a dry woodland garden. They will do well in swampy area as well. They can easily be propagated sticking their suckers directly in the earth.

There are several types of snowberry plants including *variegata* or variegated leaves, *chenaultii*, a ground cover plant, and *orbiculatus*, a shrub that produces bright red berries.

A few words of caution: The snowberry is toxic to people! Furthermore they can take over if you ignore pruning!

Enjoy! Carey Davis



# Ways & Means

If you like playing games, you can still sign up to join a group of 16 for the Mahjong Party on July 11th at 5PM, hosted by some of our Provisionals. And there's still time for you and a group of friends to join the Swiss Raclette Party on September 6th at 6:30PM:

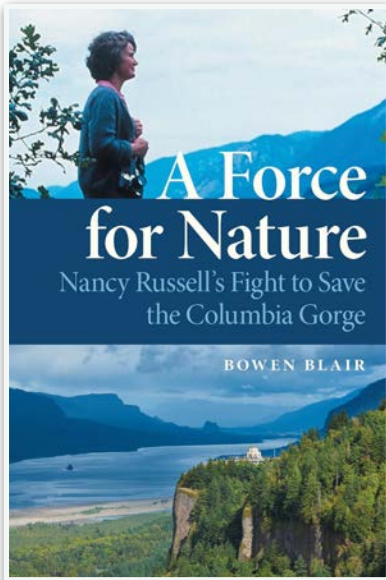
- Mahjong Party on 7/11/24 – 3 spots (\$100)
- Swiss Raclette Party on 9/6/24 – 21 spots (\$75)

Seattle Garden Club events are always fun and a great way to get to know other members. More importantly, the money raised is used to fund the yearly grants we make to support our broader community, which is part of our stated Purpose.

If you are interested in joining these events, please email Sarah Robinson ([mrs\\_robinson1@hotmail.com](mailto:mrs_robinson1@hotmail.com)) or Marianne Kitchell ([kitchell3@gmail.com](mailto:kitchell3@gmail.com)).



## Joint Luncheon with TGC



Our Joint SGC/TGC meeting will be held at the Sunset Club on **Thursday, April 18** at 10 am. The focus will be on Conservation. Bowen Blair, an environmental attorney, and author (and Helen Blair's cousin) will come and present his book: [A Force for Nature](#). The book is an in-depth study of the protection of the Columbia River Gorge through the biography of Nancy Russell, a woman with no political or organizing experience who mounted a national campaign to protect the Gorge, one of the nation's most scenic, historic and threatened landscapes. You will learn about Nancy and her ties to and support from the Portland Garden Club and GCA. You will also have the opportunity to ask questions about the future of public lands. Bowen is the Senior Staff Member for the Friends of the Columbia River Gorge, The Trust for Public Land and The Indian Country Conservancy. He was also appointed by two Oregon Governors to the Gorge Commission which he also chaired. This will be an interesting meeting! Please try to read the book beforehand. The meeting and lunch will be held at the Sunset Club at 10:00 with valet parking, so please plan on carpooling!

RSVP please! Link [HERE](#)

Visit Bowen Blair's website [here](#)

## Garden History & Design

On February 8<sup>th</sup>, the SGC GH&D Committee plus Carolyn Kitchell and Kim Bishop welcomed Suzanne Bishop, recent GCA Vice Chair of GH&D from 2022-23. She gave an extremely informative and interesting 2 hour workshop. The presentation was split between the history of lantern slides (how they were made, examples from Tacoma and Seattle plus other locations, color standards as slides were painted and the leadership GCA took to support lantern slides as a form of garden documentation). Over 3000 Lantern slides were donated to the Smithsonian and formed the basis of the formal partnership of the Smithsonian Museum American Archive of Gardens (AAG) and the Garden Club of America. The other half of the workshop was focused on the process to document a garden for acceptance in the AAG and was computer based using the GCA GH&D Committee website and the AAG website. She highlighted Pam Green's garden, as it was a GCA Featured Garden Mary Turner submitted. The workshop was followed by a tour of Vicky Reed's Garden, lunch at The Pink Door, a tour of Nancy Bain's garden, ending with a tour of Norcliffe.



*Suzanne Bishop*



*Anne Dor GH&D Chair*





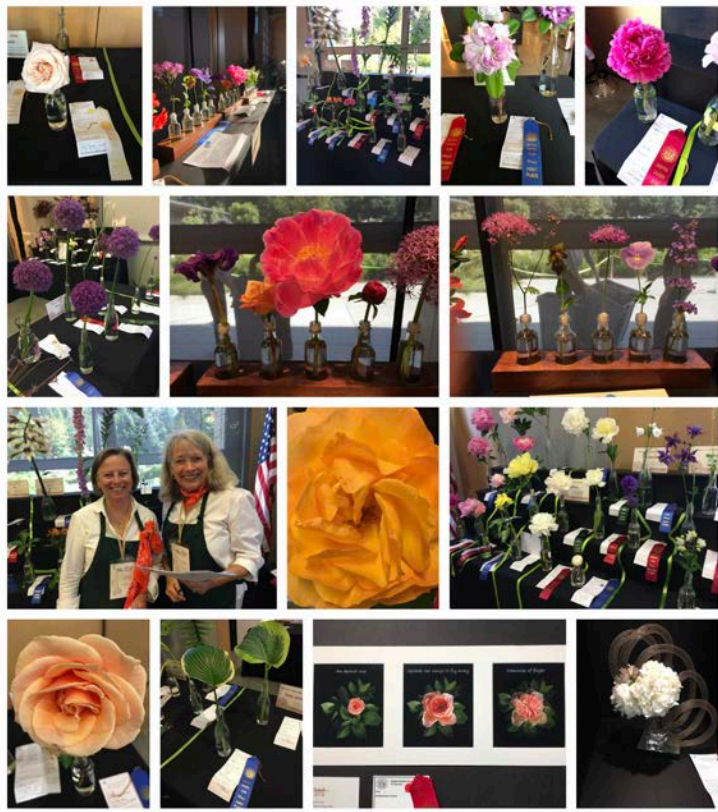


# Photography

**Please help by volunteering to photograph our Garden Inspirations Flower Show May 7<sup>th</sup>-9<sup>th</sup>!**

[Garden Inspirations Show](#) photographers needed for each of the Divisions, behind the scenes (set-up, passing and candid) and Preview Party. **[Please Sign Up - Select Here](#)**

Thank you for your help! Samples of photos at right and below.



March 18<sup>th</sup>, South Seattle College Arboretum Photo Walk with Michele Burton, Catherine Parker and Barbara Peterson.  
Photo by Kim Bishop - [More Photos select here](#)



Michele assists

## Wetherill Work Party - Sign up

It's time to get out your garden gloves, clippers, trowels and knee pads, weather appropriate attire, and sack lunch in preparation for our **Annual Wetherill Preserve Work Party on Wednesday, April 24<sup>th</sup>, at 9:00 a.m.**  
[SIGN UP HERE!](#)

Wetherill Slide Show - [Select Here](#)



More Work Party photos [select here](#)



## Conservation

Beth Ketcham and Christina Koons have been attending the NAL conference as our Representatives at this important GCA event.

Please be sure to check the GCA website here to view the recorded 2024 speakers. We look forward to hearing about Beth's and Christina's time in Washington DC

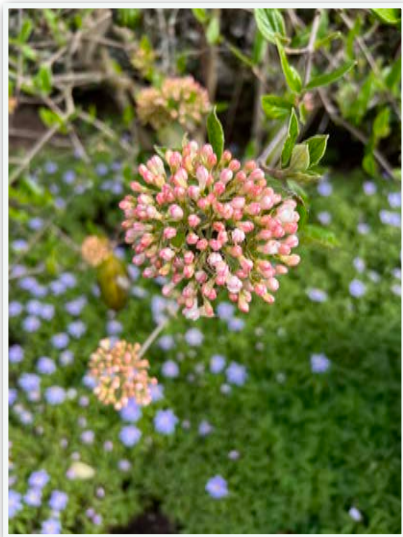
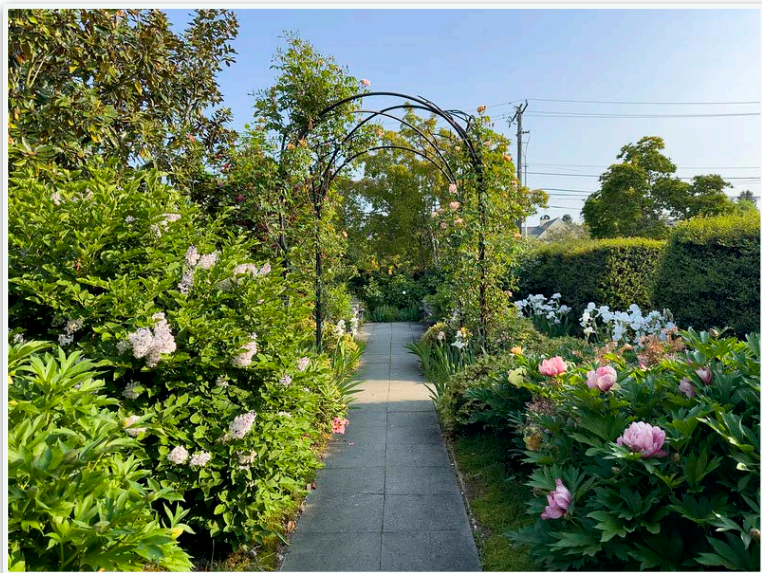
*Beth Ketcham and Christina Koons with Arlee Ehlers and Amy Rushforth (TGC) in Washington DC at the NAL Conference*



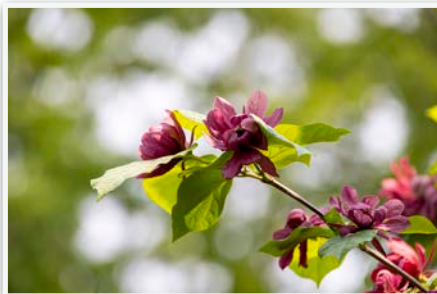
Please be sure to visit the Conservation exhibit the SGC Flower Show. We will be featuring the CUH farm and showcasing information on soil health, water conservation, and indigenous crops.

## Fragrance Garden

Join in for a clean up of our special and wonderful Fragrance Garden at CUH on April 22, from 10-12. Please pitch in and garden!



Come and smell the flowers!





# GCA Scholarships

Last week was fantastic at GCA HQ! The Scholarship Committee met to review the proposed 2024 GCA scholars whose unique passion align with the GCA's mission to restore, improve and protect the quality of the environment. Thanks to the careful management of GCA's endowment funds and the generosity of members, clubs, and friends this is an historic year for scholarship. A record \$459,000 was approved for ninety-nine scholars. Twenty percent of them are from Zone XII in fields including desert studies, native plants, medicinal botany, and urban forestry. Details about the 2024 scholars will be posted in April and published in summer issue of The Bulletin. They are a remarkable group of future botanists, horticulturists, landscape architects and environmental scientists, to name a few. It is a thrill to be involved with such a banner year for GCA scholarship!

Liz Gilfillan

GCA Scholarship - Zone XII representative



It's a banner year for GCA Scholarships!

*A record 99 scholars funded and a record \$459,000 awarded through the GCA's 29 scholarships.*

Congratulations to Zone XII's Jon Ye, undergraduate in Molecular and Cellular Biology and Data Science at University of California, Berkeley. Ye is the recipient of The Elizabeth Gardner Norweb Summer Environmental Studies Scholarship.

The Norweb Scholarship will support Ye's research, "Understanding the Role of Endozoicomonas in Coral Health."



It's a banner year for GCA Scholarships!

*A record 99 scholars funded and a record \$459,000 awarded through the GCA's 29 scholarships.*

Congratulations to Zone XII's Katherine Culbertson, PhD candidate in Environmental Science, Policy, and Management at University of California, Berkeley.

Culbertson is the recipient of the The Garden Club of America Fellowship in Tropical Botany.

The GCA Fellowship in Tropical Botany will support Culbertson's project, "Investigating Rainforest Resilience and Barriers to Regeneration in Eastern Madagascar."



Congratulations to Zone XII's Mark Kerstens, PhD candidate in Sustainable Forest Management at Oregon State University. Kerstens is the recipient of the Frances M. Peacock Scholarship for Native Bird Habitat.

The Peacock Scholarship will support Kerstens' project, "Assessment of Potential Food Availability for Breeding Black-backed Woodpeckers in Unburned Forests."



It's a banner year for GCA Scholarships!

*A record 99 scholars funded and a record \$459,000 awarded through the GCA's 29 scholarships.*

Congratulations to Zone XII's Gabrielle Monymaker, PhD candidate in Botany and Plant Sciences at University of California Riverside. Monymaker is the recipient of the GCA Award in Desert Studies.

The Desert Studies Award will support Monymaker's research, "How to Survive Environmental Extremes: A Giant Rosette's Guide to the Desert."

# Poetry

## An April Adoration

by Sir Charles George Douglas Roberts

Sang the sun rise on an amber morn —  
'Earth, be glad! An April day is born.

'Winter's done, and April's in the skies,  
Earth, look up with laughter in your eyes!



April

Mary Bartol

Capricious April, warm thy breath,  
And wake the sleepy crowd  
Of folded buds, that close beneath  
The juniper are bowed;  
And call a smile into the dawn,  
And coax that smile to stay,  
Then laugh, and shout, and push the  
morn  
With frolic into day!



## Calling the Roll

by Annette Wynne

April calls,  
Through spring time halls,  
"Bluebird, crocus, violet,  
Do you forget  
To grow? To sing?"  
Soon they answer to the call,  
"Present early one and all,"





# April Calendar

[Link to Calendar](#)  
select <https://>

| Seattle Garden Club Event Calendar<br>April 2024                  |  |   |  |   |  |  |
|---|--|---|--|---|--|--|
| Sunday  | Monday   | Tuesday   | Wednesday  | Thursday  | Friday   | Saturday   |
|   | <b>1</b><br>9:00AM - 9:45AM<br>Flower Show Committee Meeting<br>9:15AM - 11:30AM<br>Hort Meeting - CUH: Linda Walker's Provisional Presentation "Garden in Art, Post Industrial"<br>12PM - 1:00PM<br>Conservation Committee Meeting<br>12:00PM - 1PM<br>Provisional Brown Bag session to follow after Hort meeting | <b>2</b><br>Birding trip-Seward park (Auction experience) | <b>3</b><br>11:30AM<br>Luncheon at the home of Nancy Bain (Auction experience) | <b>4</b><br>10AM - 12PM<br>Board Meeting, Sunset Club/Hybrid<br>zoom link:<br><a href="https://us02web.zoom.us/j/83062907644?pwd=Uk8rYTU1WjBwUkVGV1BvT3h5aUxhMz09">https://us02web.zoom.us/j/83062907644?pwd=Uk8rYTU1WjBwUkVGV1BvT3h5aUxhMz09</a> | <b>5</b>   | <b>6</b>   |
| <b>7</b>  | <b>8</b>   | <b>9</b>  | <b>10</b>  | <b>11</b>   | <b>12</b>  | <b>13</b>  |
| <b>14</b>   | <b>15</b>  | <b>16</b>   | <b>17</b>  | <b>18</b><br>10:30AM<br>Joint Meeting Luncheon w/Tacoma Burke Museum  | <b>19</b>  | <b>20</b><br>Deadline for Newsletter Submissions to EdieS548@msn.com |
| <b>21</b>   | <b>22</b><br>10AM - 12PM<br>Fragrance Garden cleanup   | <b>23</b>   | <b>24</b><br>9:00AM - 1:00PM<br>Wetherill Nature Preserve Work Party           | <b>25</b><br>11AM<br>Everyday Flower Farm tour - Skagit Valley (Auction Item)   | <b>26</b><br>GCA Annual Meeting - "The GCA's 2024 Annual Meeting" - In Person, Limited invites | <b>27</b><br>GCA Annual Meeting - "The GCA's 2024 Annual Meeting"    |
| <b>28</b><br>GCA Annual Meeting - "The GCA's 2024 Annual Meeting" | <b>29</b>  | <b>30</b>   |  |   |  |  |

# May Calendar

[Link to May Calendar here](#)

| Seattle Garden Club Event Calendar<br>May 2024 |   |  |  |   |           |           |
|--|---|--|--|---|-----------|-----------|
| Sunday   | Monday  | Tuesday  | Wednesday  | Thursday  | Friday    | Saturday  |
|  |   |  | <b>1</b>   | <b>2</b><br>10AM - 12PM<br>Board Meeting, Sunset Club/Hybrid<br>zoom link:<br><a href="https://us02web.zoom.us/j/83062907644?pwd=Uk8rYTU1WjBwUkVGV1BvT3h5aUxhMz09">https://us02web.zoom.us/j/83062907644?pwd=Uk8rYTU1WjBwUkVGV1BvT3h5aUxhMz09</a> | <b>3</b>  | <b>4</b>  |
| <b>5</b>                                       | <b>6</b><br>8:45AM - 9:15AM<br>Horticulture Committee Meeting<br>9:15AM - 11:30AM<br>Hort Meeting - CUH: Beth Ketcham's Provisional Presentation: "Garden in Art, Current Day"<br>11:30AM - 12:30PM<br>Flower Show Committee meeting<br>12PM - 1:00PM<br>Conservation Committee Meeting<br>12:00PM - 1:00PM<br>Provisional Brown Bag session to follow after Hort meeting | <b>7</b><br>SGC, GCA Flower Show "Garden Inspirations" | <b>8</b><br>SGC, GCA Flower Show "Garden Inspirations"   | <b>9</b><br>SGC, GCA Flower Show "Garden Inspirations"  | <b>10</b> | <b>11</b> |
| <b>12</b>                                      | <b>13</b>   | <b>14</b>  | <b>15</b>  | <b>16</b><br>9:30AM<br>General Meeting - Flower Farm (Field Trip)   | <b>17</b> | <b>18</b> |
| <b>19</b>                                      | <b>20</b><br>Deadline for Newsletter Submissions to EdieS548@msn.com  | <b>21</b>  | <b>22</b><br>10AM<br>Miller Garden Tour<br>5PM - 8PM<br>SGC Board Cocktail Party at Vicki Reed's | <b>23</b>   | <b>24</b> | <b>25</b> |
| <b>26</b>                                      | <b>27</b>   | <b>28</b>  | <b>29</b>  | <b>30</b>   | <b>31</b> |           |